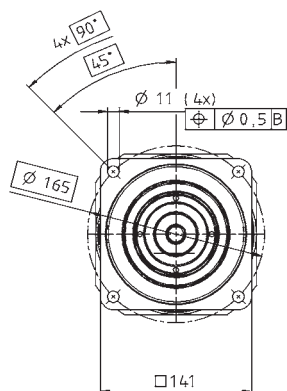
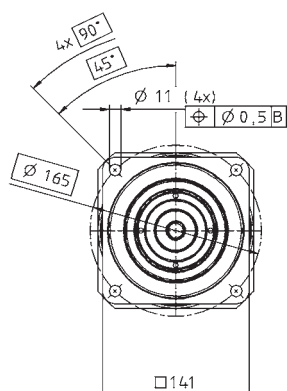


Motor shaft diameter [mm]

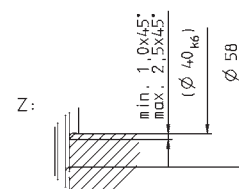
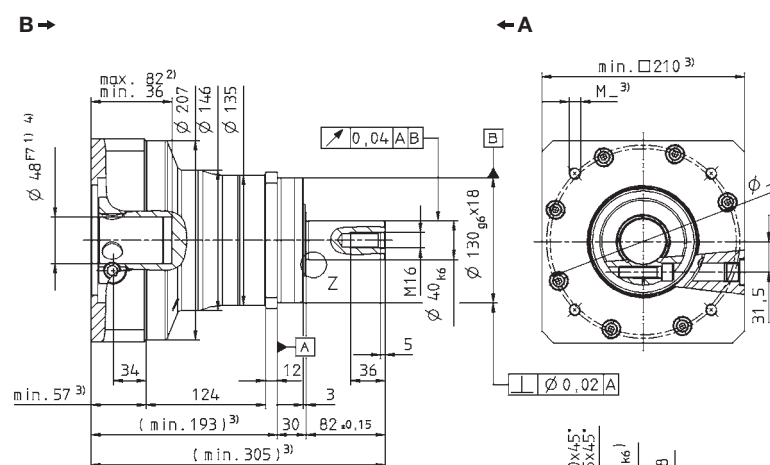
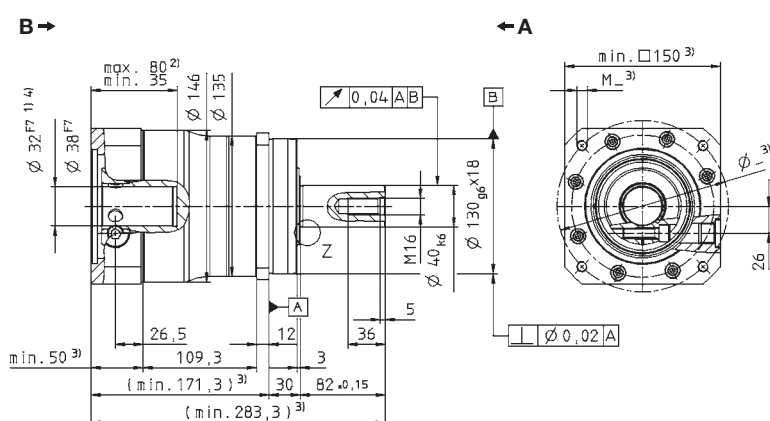
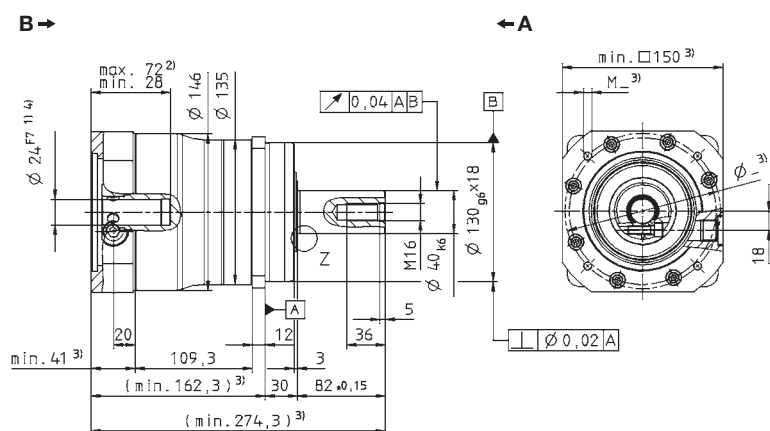
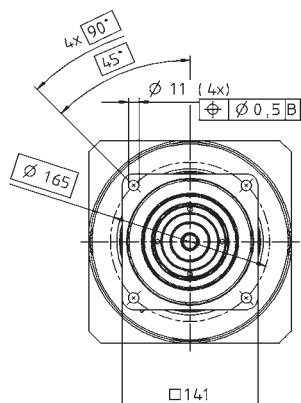
up to 24 ⁴⁾ (G)
clamping hub
diameter



up to 32/38 ⁴⁾
(I/K) clamping
hub diameter

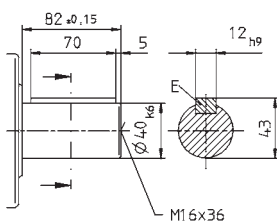


up to 48 ⁴⁾ (M)
clamping hub
diameter

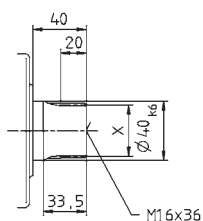


Alternatives: Output shaft variants

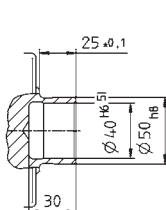
Keywayed output shaft in mm
E = key as per DIN 6885, sheet 1, form A



Involute gearing DIN 5480 in mm
X = W 40 x 2 x 30 x 18 x 6m, DIN 5480



Shaft mounted
Mounted via shrink disc



Non-tolerated dimensions ± 1 mm

- 1) Check motor shaft fit.
- 2) Min./Max. permissible motor shaft length.
Longer motor shafts are adaptable, please contact us.
- 3) The dimensions depend on the motor.
- 4) Smaller motor shaft diameter is compensated by a bushing with a minimum thickness of 1 mm.
- 5) Tolerance h6 for mounted shaft.

 Motor mounting according to operating manual

