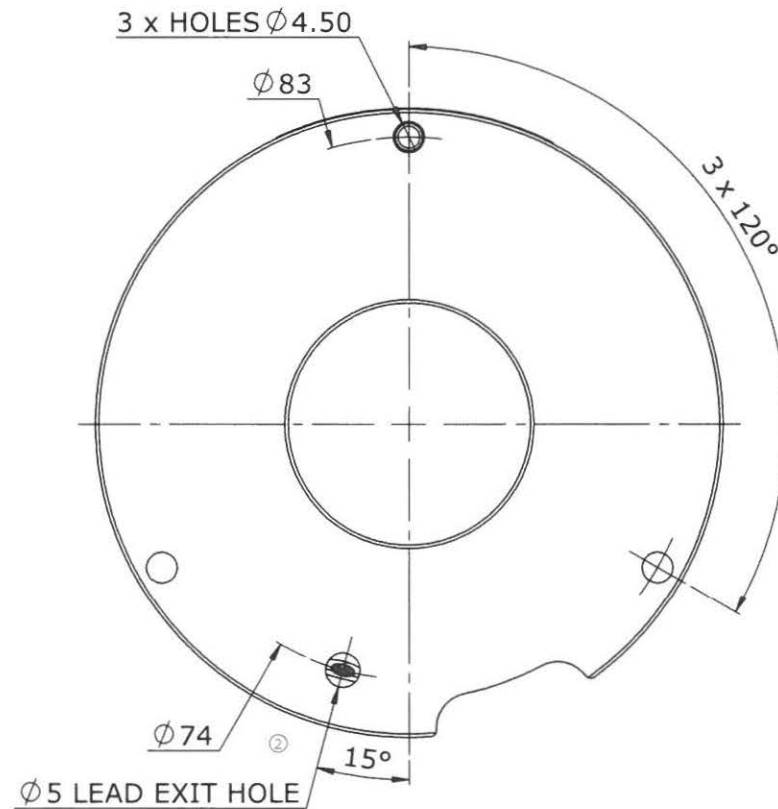


NOTES :

1. MINIMUM BRAKE LIFE OF 1000 DYNAMIC STOPS IS POSSIBLE PROVIDED THE MAXIMUM ENERGY PER HOUR OF 27 KJ IS NOT EXCEEDED AT 450J PER ENGAGEMENT WITH 1 MIN BETWEEN ENGAGEMENTS AT 3000RPM. ②
2. MINIMUM BRAKE LIFE IN EXCESS OF 1,000,000 ELECTRICAL ON/OFF CYCLES.
3. BRAKE SUPPLIED & FACTORY SET AT 23 Nm MINIMUM TO ENSURE 20 Nm IN ALL CONDITIONS PER NOTE 1 ABOVE.
4. ARMATURE & END PLATE ARE ZINC PLATED. ③

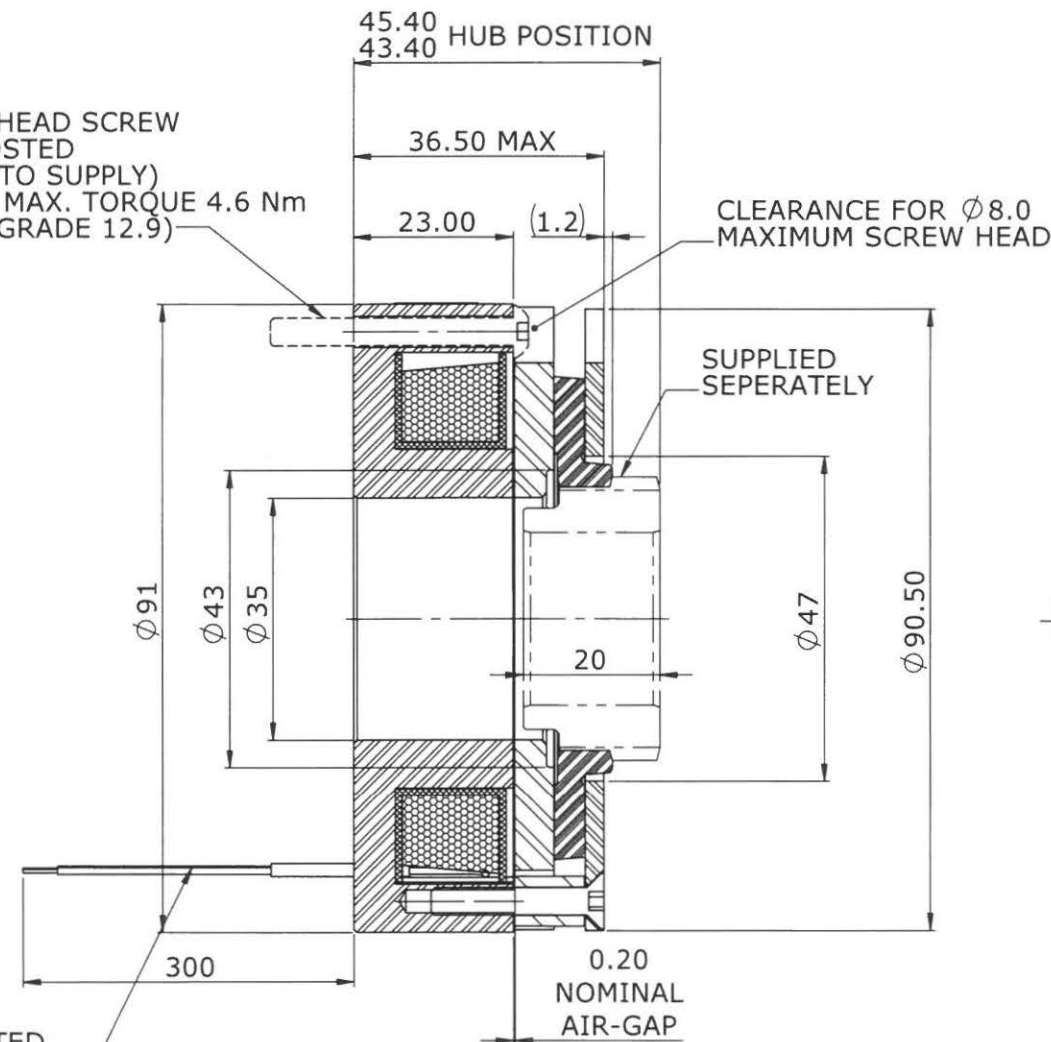
SAP No : 20047914

CUSTOMER REFERENCE:XXXXXXXXXX

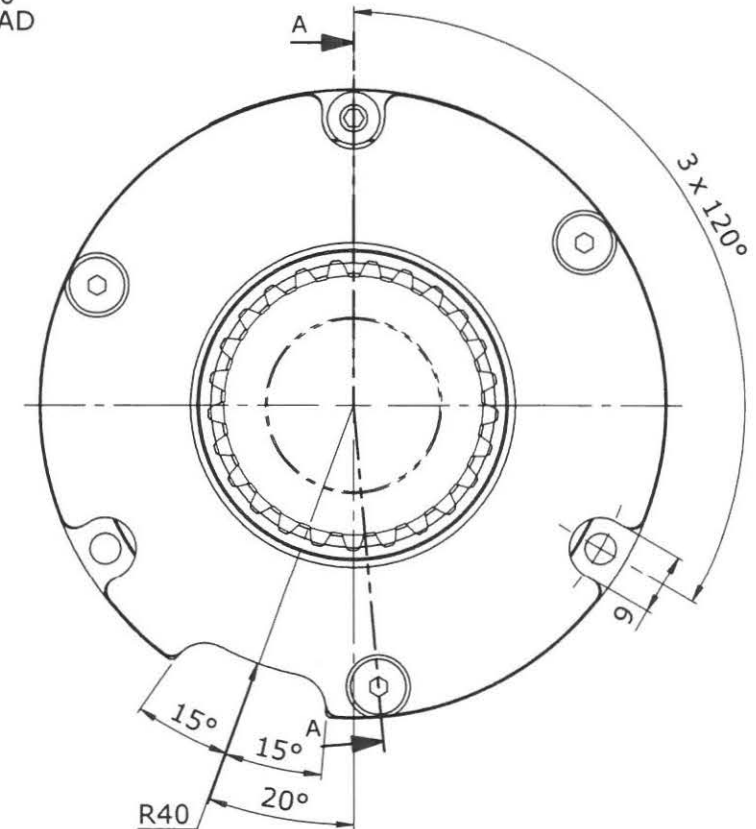


M4 BUTTON HEAD SCREW
SHOWN GHOSTED
(CUSTOMER TO SUPPLY)
TIGHTEN TO MAX. TORQUE 4.6 Nm
(ASSUMING GRADE 12.9)

LEADS - 22AWG - UL RATED
200 °C; 600 V.
WHITE PTFE INSULATION



SECTION A-A



BRAKE SPECIFICATION :

STATIC TORQUE (DRY) = 20 Nm MINIMUM

ABOVE CONDITIONS APPLY FOR TEMPERATURE RANGE -5°C TO 120°C & SPEED RANGE 0 - 6500 RPM.

OPERATING VOLTAGE = 24 Vdc ± 10%
POWER CONSUMPTION (AT 20°C) = 23 WATTS ± 7%
COIL RESISTANCE (AT 20°C) = 26.84 ± 7%
ELECTRICAL INSULATION = CLASS 'F' MINIMUM
RELEASE VOLTAGE (AT 20°C) < 16 Vdc
RE-ENGAGE VOLTAGE (AT 20°C) > 1.2 Vdc
FIRST STEP RESPONSE TIME = 25 ms
FULL BRAKE RESPONSE TIME = 68.2 ms
FIRST STEP RELEASE TIME = 98.3 ms
FULL BRAKE RELEASE TIME = 126 ms
BACKLASH = 0.75° MAX.
INERTIA = 0.000021 Kg·m²

LABEL EXAMPLE
SERIAL No / DATE & CUSTOMER REF.
MATRIX PART No. & REVISION No.
VOLTAGE & POWER



0001-11-13 : *****
1EB028-68 : ISS 4
24 V : 23 W

| | |
|---------------|--------|
| APPROVED BY : | DATE : |
| SIGNATURE : | |
| POSITION : | |
| COMPANY : | |

PREVIOUSLY WAS PD0041-13



Electric Clutch Brake Group
Warner Electric • Matrix International
Inertia Dynamics • Warner Linear
www.altramotion.com

THIS DRAWING IS THE PROPERTY OF
MATRIX INTERNATIONAL LIMITED AND IT MAY NOT
BE COPIED OR USED FOR ANY PURPOSE EXCEPT
DIRECTLY FOR THE COMPANY WITHOUT THEIR PRIOR
WRITTEN CONSENT NOR IS IT TO BE SHOWN
TO ANY THIRD PARTY.

THE FOLLOWING CONDITIONS APPLY UNLESS
OTHERWISE STATED.

1. DIMENSIONS IN MILLIMETRES (mm).
2. UNTOLERANCED DIMENSIONS ARE NOMINAL DIMENSIONS
3. ANGLES REFERENCE ONLY.

CHECKED
MH BN

TITLE:-

INSTALLATION DRAWING OF A SPRING
APPLIED, ELECTROMAGNETICALLY
RELEASED BRAKE

WEIGHT:
1.271 kg



A2

1EB028-68

4

| REV | DATE | DESCRIPTION | BY | CHKD | DATE |
|-------|---------|-----------------------|-----|------|----------|
| 4 | 20181 | REVISION UPDATE ONLY | DLP | | 27/09/16 |
| 3 | 19992 | FINISH NOW ZINC PLATE | MS | | 08/05/15 |
| 2 | 19945 | NOTES CHANGE | bn | | 09/01/15 |
| 1 | - | FIRST ISSUE | bn | | 03/11/14 |
| ISSUE | MOD No. | MODIFICATION | ENG | CKD | DATE |

DRAWING NUMBER

ISSUE