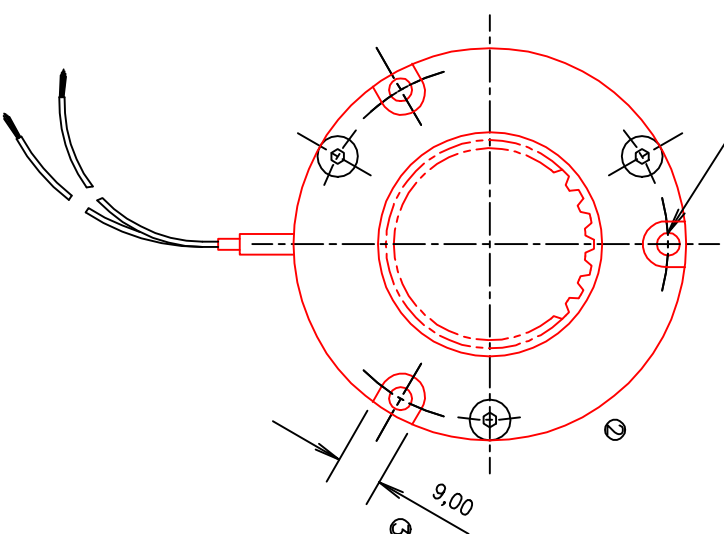


3 OFF FIXING HOLES $\phi 4.5$ THROUGH MAGNET EQUI-SPACED ON A 70.0 P.C.D. (CLEARANCE THROUGH ARMATURE AND END PLATE FOR M4 SCREWS)



BRAKE SPECIFICATION:

DRY, UNBEDDED STATIC TORQUE = 12 Nm

FOR APPLICATIONS INVOLVING DYNAMIC TORQUE
PLEASE CONSULT OUR ENGINEERING DEPARTMENT

FOR 24 VOLT d.c. OPERATION

POWER CONSUMPTION AT 20°C = 16 WATTS

BRAKE MASS = 0.87 kg

INERTIA = 0.000029 kgm²

BACKLASH = 0.75° TYPICAL

RESPONSE TIME (WITHOUT DIODE) =

RESPONSE TIME (WITH DIODE) =

RELEASE TIME =

2-OFF FLYING LEADS
x 650mm lg.
(19/0.15mm 22AWG)
WHITE PTFE INSULATED.
BSG.210 TYPE A.

THE FOLLOWING CONDITIONS APPLY UNLESS OTHERWISE STATED.

1. DIMENSIONS IN MILLIMETRES (mm).
2. SURFACE FINISH: MILL FINISH.
3. UNTOLERANCED MACHINED DIMENSIONS ± 0.25 mm.
4. SHARP EDGES MACHINED 0.40 x 45° (OR EQUIVALENT RADIUS).

CHECKED

DRAWN

TITLE:-
INSTALLATION DRAWING
OF A SPRING APPLIED, E'M
RELEASED BRAKE.

AutoCAD GENERATED



A3

1EB024-16

3

DRAWING NUMBER

ISSUE

MOD No.

DATE

3	18891	19/03/07
2	18846	04/08/06
1		13/06/97



Brechin • Scotland • DD9 7EP
Tel: +44 (0)1356 602000 Fax: +44 (0)1356 602000
Email: sales@matrix-international.com