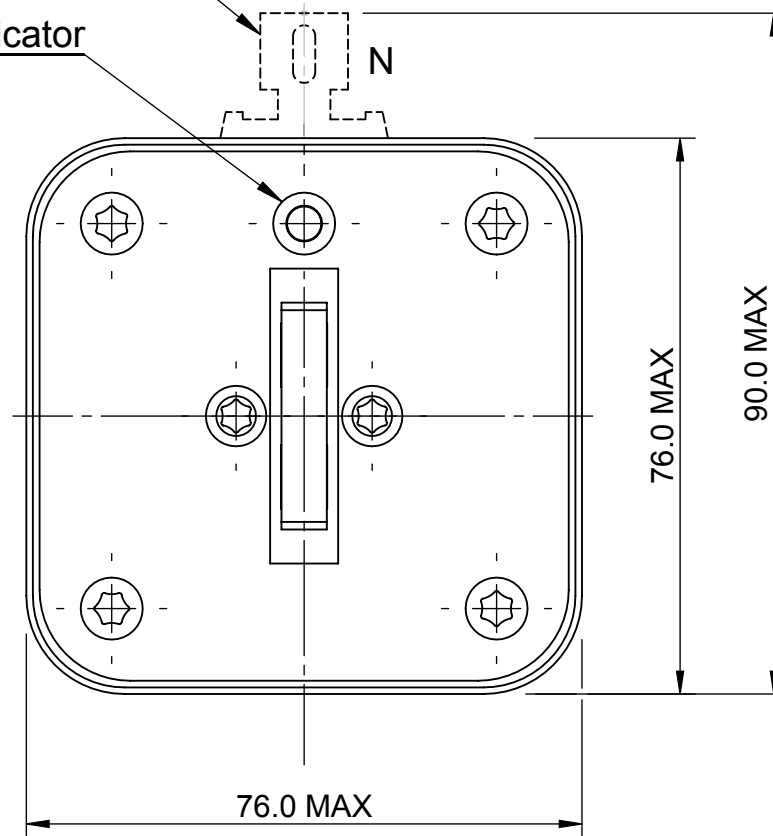


Tag for clip-on switch

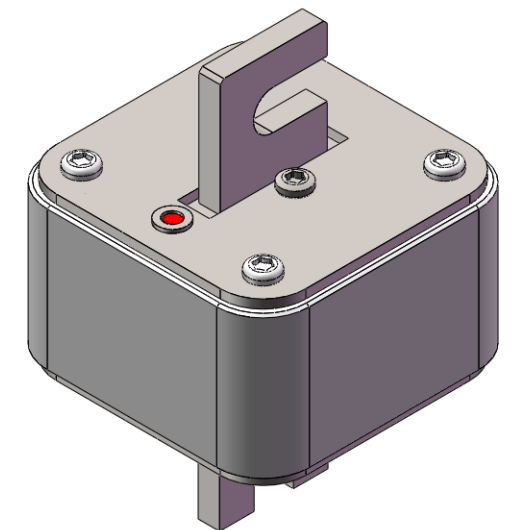
Indicator




REVISION

REV	DESCRIPTION	BY	DATE	CHANGE NO.
D	DRAWING UPDATED WITH EATON TEMPLATE	KVS	29/11/2016	BUEI4519

POS.	TYPE	TYPE For Clip-on Micro Switch	A MAX.	B	C MAX.	D	E
1	3 / 80	3T / 80	52	78±1,6	111	14±2	
2	3 / 110	3T / 110	52	108±2,0	141	29±2	
3		3S / 110	52	108±2,0	141	29±2	48±1
4	3 / 110	3T / 110	82.5	108±2,0	141	14±2	
5	3 / 140	3T / 140	82.5	138±2,0	171	29±2	
6	3 / 140	3T / 140	113	138±2,2	171	14±2	
7	3 / 150	3T / 150	124.5	150±2,3	183	14±2	
8	3 / 170	3T / 170	143	168±2,5	201	14±2	
9	3 / 200	3T / 200	143	198±2,5	231	29±2	
10	3 / 210	3T / 210	183.5	208±2,9	242	14±2	
11	3 / 260	3T / 260	236	260±3,4	294	29±2	
12	3 / 340	3T / 340	291	345±4,0	379	29±2	
13	3 / 480	3T / 480	458	480±4,6	514	14±2	
14	3S / 140	3ST / 140	82.5	138±2,0	171	29±2	
15	3S / 210	3ST / 210	143	208±2,5	241	34±2,5	
16	3 / 320	3T / 320	291	315±4,0	349	14±2	
17		3ST / 110	82.5	108±2,0	141	14±2	78±1,3
18	3 / 200		167	192±2,7	225	14±2	
19		3ST / 100	75	101±1,9	134	14±2	71±1,2
20	3S / 110	3ST / 110	75	108±2,0	141	17±2	



MODEL VERSION: 01	UNLESS OTHERWISE SPECIFIED, ALL DIMENSIONS ARE IN MILLIMETERS:		HIGH SPEED FUSES SIZE 3					 <i>Powering Business Worldwide</i>			
	TOLERANCES UNLESS OTHERWISE SPECIFIED: GENERAL ± 0.2mm ANGULAR ± 1°										
	UNCONTROLLED COPY		DRAWN BY: NS	DATE: 01/04/09	SCALE: NTS	ANGLE: FIRST	SIZE: A3	EATON Burton-on-the-Wolds, Leics, LE12 5TH Tel +44 1509 882 600			
	THIS DRAWING IS CONFIDENTIAL AND THE COPYRIGHT OF EATON AND MUST NOT BE COPIED OR PASSED ON TO A THIRD PARTY WITHOUT WRITTEN CONSENT		MATERIAL: VARIOUS		FINISH: NONE		DWG NO: 170X0266			REV: D	SHEET: 1 OF 1
MODEL SOURCE FILE: U0028											