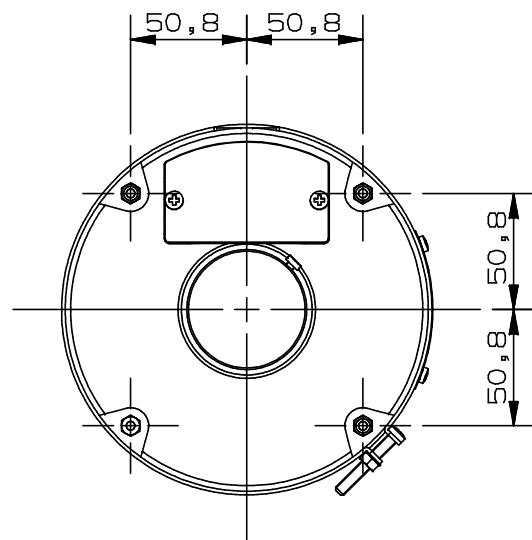


DIMENSIONS IN MILLIMETRES UNLESS OTHERWISE STATED
DO NOT SCALE FROM DRAWING

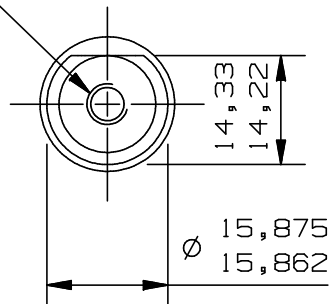
DRG
No. 8.5650.9410.11

CUST
No.

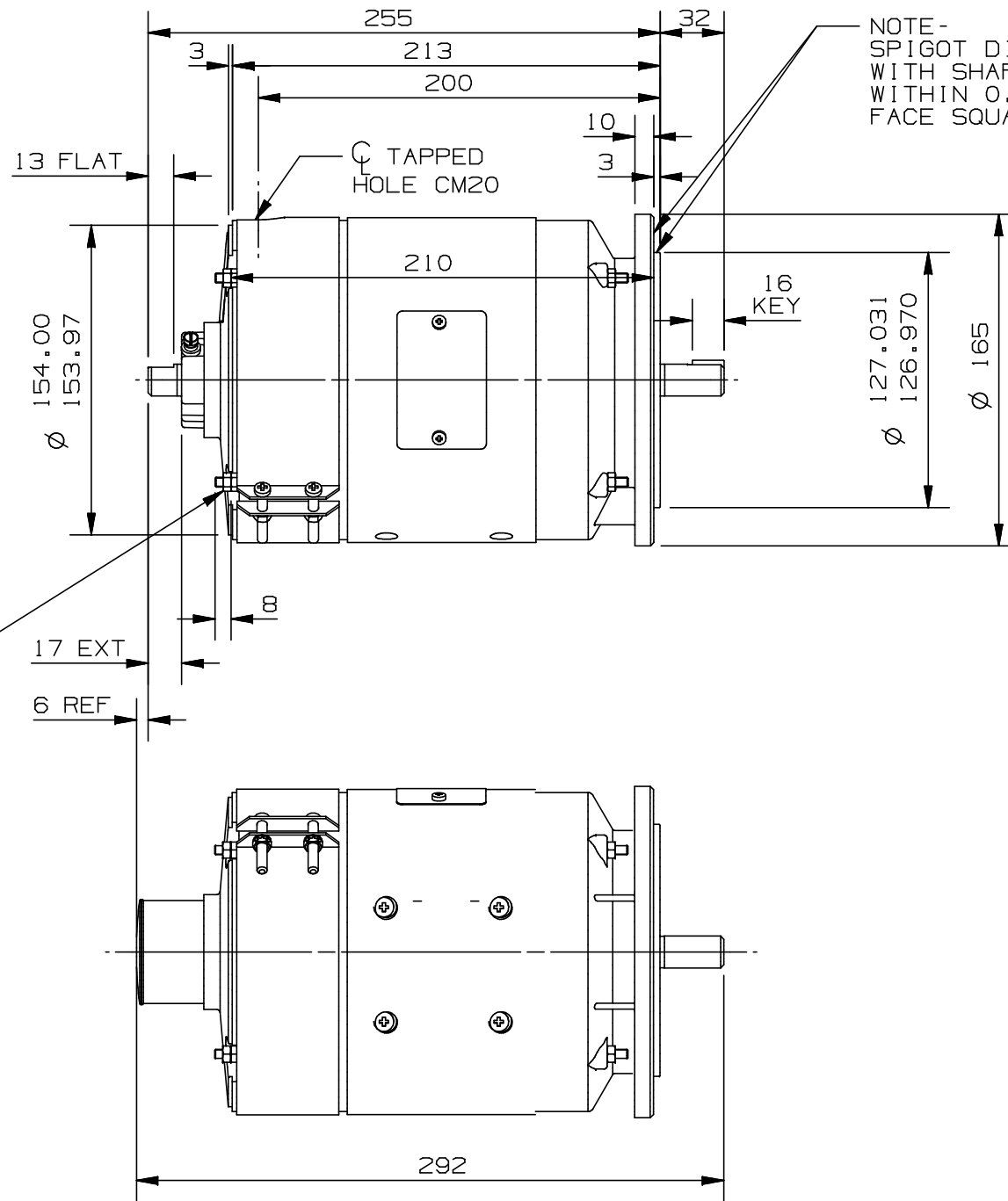


THE SECOND NUT MAY BE REMOVED
FROM THE THRO FRAME STUDS TO
ALLOW USE OF 8mm OF THREAD.

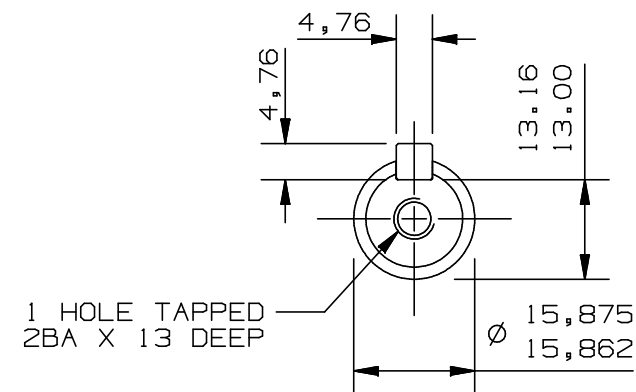
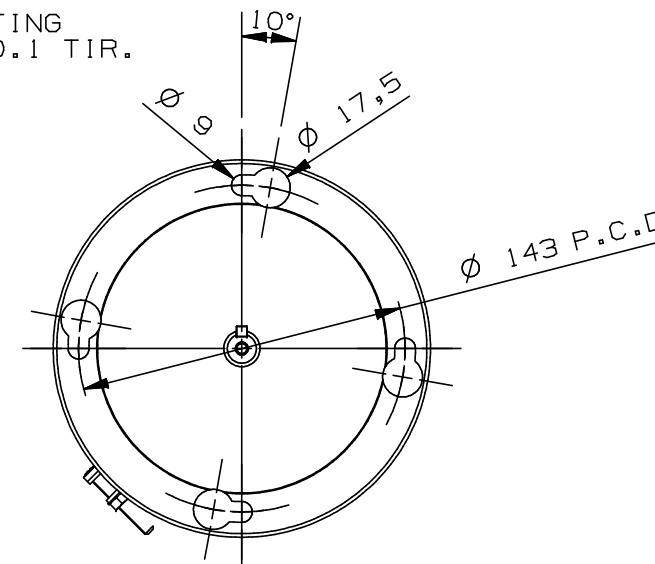
1 HOLE TAPPED
2BA X 13 DEEP



COMM END SHAFT DETAILS



NOTE -
SPIGOT DIA CONCENTRIC
WITH SHAFT AXIS TO
WITHIN 0.08 TIR & MOUNTING
FACE SQUARE TO WITHIN 0.1 TIR.




DRIVE END SHAFT DETAILS

NOTE -

OTHER APPARATUS MAY BE MOUNTED ON THE 154 DIA SPIGOT AT COMMUTATOR END, USING THE FOUR M5 STUDS. THE WEIGHT AND THE OVERHANG OF THE INSTRUMENT AND ADAPTOR SHOULD BE LIMITED SO AS NOT TO EXCEED A MAXIMUM MOMENT OF 1.66KG METRES MEASURED FROM THE FACE OF THE TACHOMETER GENERATOR MOUNTING FLANGE AT THE DRIVE END. THE PROTECTION CAP SHOULD BE REMOVED TO EXPOSE THE COMM END SHAFT EXTENSION.

CUSTOMER		SERIAL No		CUST O/N	
FRAME		K.W.		R.P.M.	
ARM VOLTS		FIELD VOLTS		WINDING	

ISSUED BY D.S.D.O.		<div> SPECIAL PRODUCTS</div> <div>Technology in Motion</div>		TITLE		BD2510	
AT CRADLEY HEATH				TACHO GENERATOR			
DR'N N.R.TAYLOR DATE 01-06				OUTLINE DIMENSIONS			
17.062 DATE				FLANGE MOUNTING ONLY			
SIMILAR DRAWINGS		FIRST ORDER NUMBER 99060586 99060591		SCALE NTS		DRG No. 8.5650.9410.11	
CY.228972 LESS BASE							
CONFIDENTIAL		COPYRIGHT		SIZE A3 297 x 420			
ATB GROUP UK LIMITED		© 2017					

MOD	DATE	MODIFICATION	CDN No	MOD	DATE	MODIFICATION	CDN No
1	02-03 2021	4 STUDS AT CE WERE 2BA NOW M5	21.008				