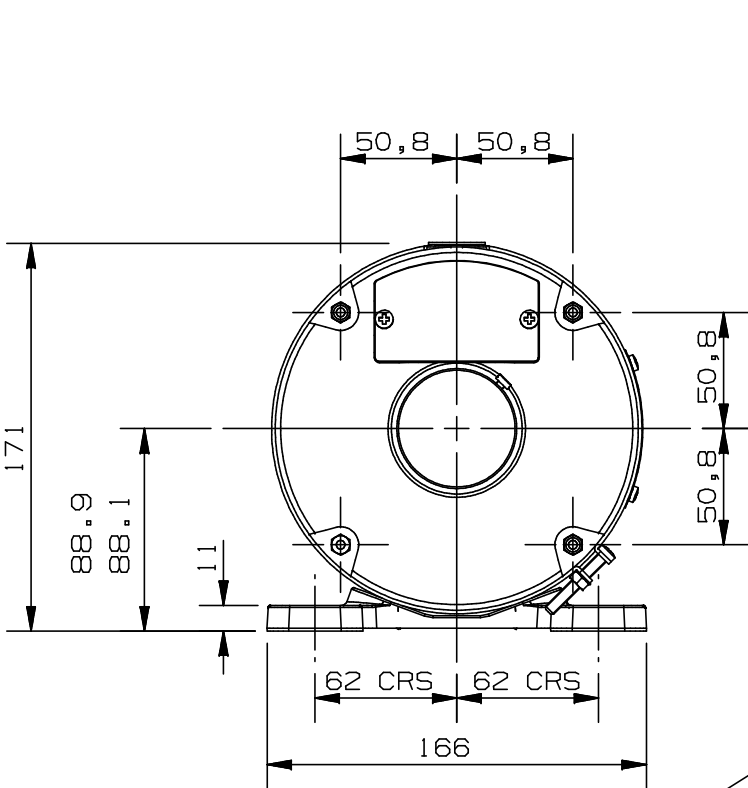


DIMENSIONS IN MILLIMETRES UNLESS OTHERWISE STATED
DO NOT SCALE FROM DRAWING

DRG No. **CY.228972**

CUST No.

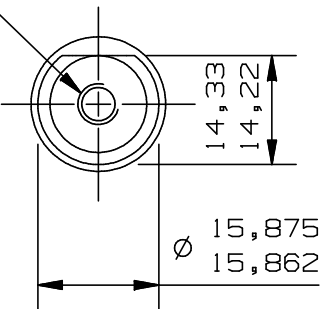
A



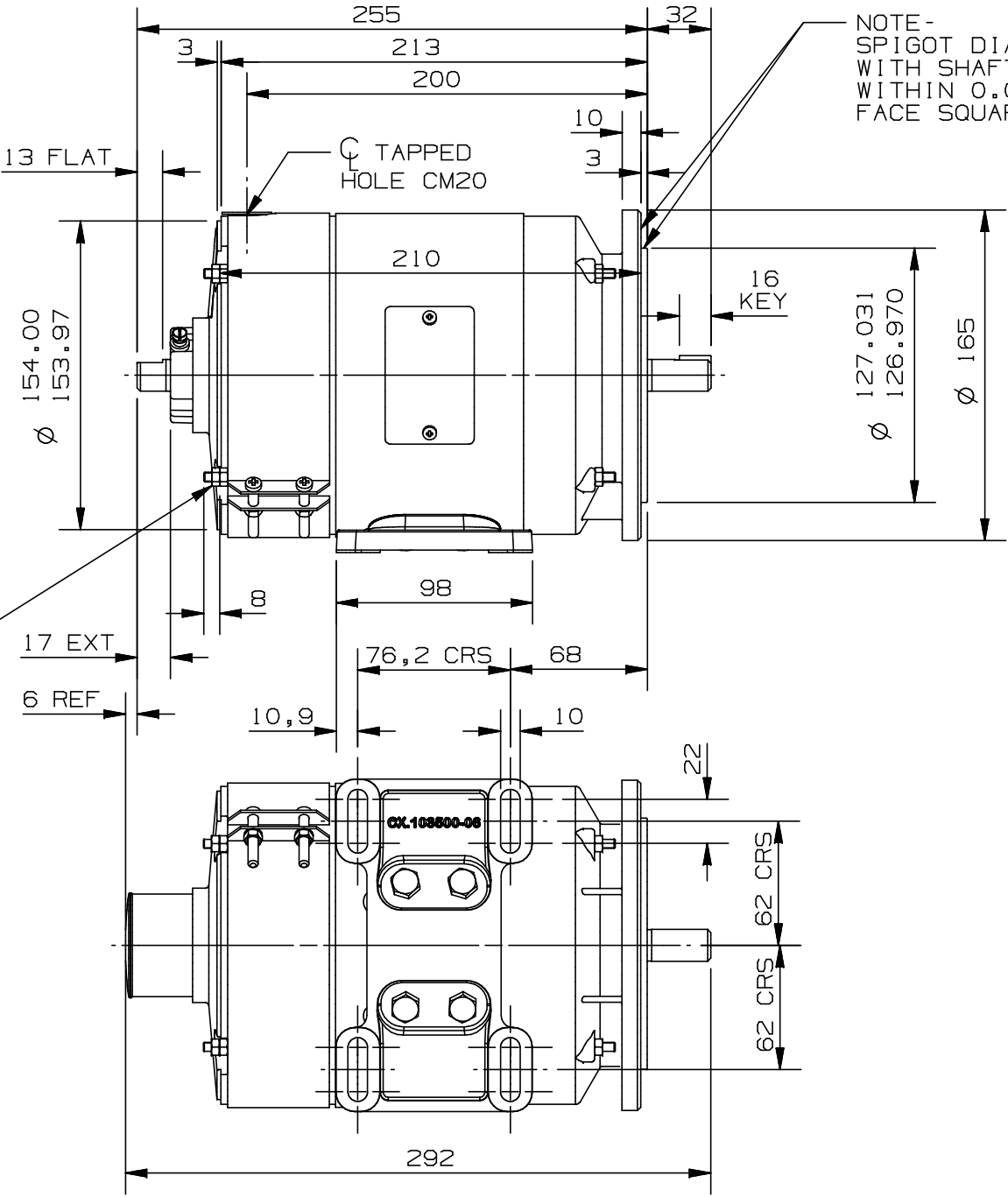
THE SECOND NUT MAY BE REMOVED FROM THE THRO FRAME STUDS TO ALLOW USE OF 8mm OF THREAD.

B

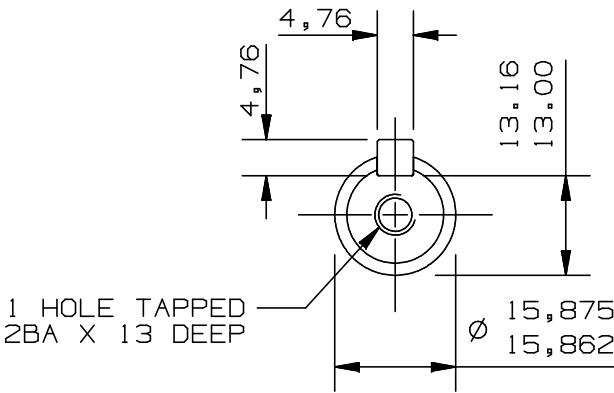
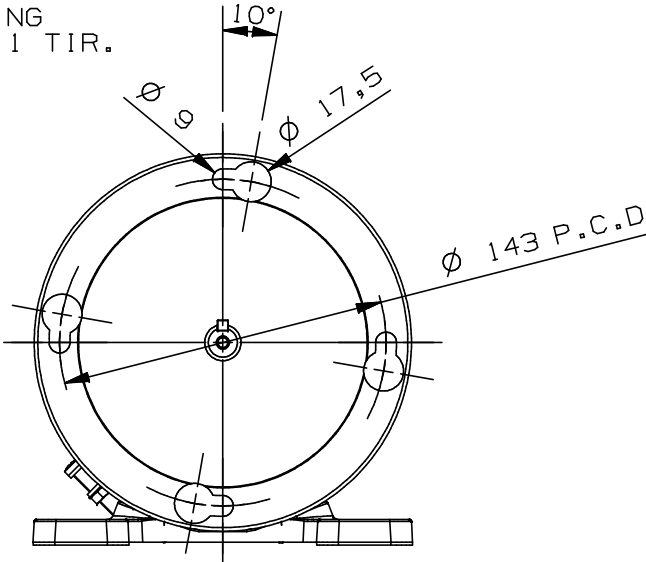
1 HOLE TAPPED 2BA X 13 DEEP



COMM END SHAFT DETAILS



NOTE - SPIGOT DIA CONCENTRIC WITH SHAFT AXIS TO WITHIN 0.08 TIR & MOUNTING FACE SQUARE TO WITHIN 0.1 TIR.




DRIVE END SHAFT DETAILS

NOTE -

OTHER APPARATUS MAY BE MOUNTED ON THE 154 DIA SPIGOT AT COMMUTATOR END, USING THE FOUR M5 STUDS. THE WEIGHT AND THE OVERHANG OF THE INSTRUMENT AND ADAPTOR SHOULD BE LIMITED SO AS NOT TO EXCEED A MAXIMUM MOMENT OF 1.66KG METRES MEASURED FROM THE FACE OF THE TACHOMETER GENERATOR MOUNTING FLANGE AT THE DRIVE END. THE PROTECTION CAP SHOULD BE REMOVED TO EXPOSE THE COMM END SHAFT EXTENSION.

CUSTOMER		SERIAL No		CUST O/N	
FRAME		K.W.		R.P.M.	
ARM VOLTS		FIELD VOLTS		WINDING	

ISSUED BY D.S.D.O.		<div> SPECIAL PRODUCTS</div> <div>Technology in Motion</div>		TITLE		BD2510	
AT CRADLEY HEATH				TACHO GENERATOR			
DR'N N.R.TAYLOR DATE 01-11				OUTLINE DIMENSIONS			
13.237 DATE							
SIMILAR DRAWINGS							
		FIRST ORDER NUMBER		SCALE		DRG No.	
		---		NTS		CY.228972	
CONFIDENTIAL		COPYRIGHT					
ATB GROUP UK LIMITED		© 2013		SIZE A3 297 x 420		THIRD ANGLE PROJECTION	

MOD	DATE	MODIFICATION	CDN No	MOD	DATE	MODIFICATION	CDN No
4	01-11 2013	RE-DRAWN ON CAD. GENERAL UPDATE.	13.237	6	17-08 2020	FOOT UPDATE TO NEW CASTING. 166 WAS 165, 98 WAS 102, 10.9 WAS 12.7 68 WAS 69, 88.1-88.9 WAS 88.2-88.9 FOUR M5 STUDS WERE 2BA.	20.033
5	19-12 2013	KEY LENGTH 16 ADDED.	13.267				